



67077 170 Ave.
 Dodge Center, MN 55927
 Phone: 507-374-2261 • Fax: 507-374-2548
Visit our website updated weekly @
www.welshequipment.com
Email: salesweq@welshequipment.com
or danweq@welshequipment.com

2016 THIRD EDITION CATALOG INDEX

TAKE ADVANTAGE NOW OF OUR GREAT SELECTION & PRICES!



LOCATED IN MINNESOTA

67077 170th Ave.
 Dodge Center, MN
 507-374-2261 Office
 507-374-2548 Fax
 800-677-0574 Toll Free



LOCATED IN GEORGIA

104 Hudson Industrial Drive
 Griffin, GA 30224
 800-677-0574 Toll Free
 770-227-2001 Office
 770-883-5405 Cell
 507-374-2548 Fax

KENWORTH REAR DISCHARGE MIXERS 2

PETERBILT REAR DISCHARGE MIXERS 3

PETERBILT, FREIGHTLINER, AND MACK REAR DISCHARGE MIXERS 4

MACK REAR DISCHARGE MIXERS 5-7

MACK, VOLVO, AND OSHKOSH REAR DISCHARGE MIXERS 8

OSHKOSH AND STERLING REAR DISCHARGE MIXERS 9

FORD AND STERLING REAR DISCHARGE MIXERS 10-12

FORD AND INTERNATIONAL REAR DISCHARGE MIXERS 13

INTERNATIONAL REAR DISCHARGE MIXERS 14-15

PETERBILT, KENWORTH, AND MACK REAR DISCHARGE MIXERS 16



Minnesota Office



Georgia Office

WE PAY TOP DOLLAR FOR SINGLE TRUCKS, MIXER FLEETS AND EQUIPMENT – CALL US TODAY!



KENWORTH REAR DISCHARGE MIXERS



2014 Kenworth W900, MX13 engine, 4500 Allison trans., D46-170HP rears w/HN susp., 5 axle, 11 yd MTM Bridgemaster V mixer. Located in MN. #1



2007 Kenworth W900, ISM Cummins engine, 4500 Allison trans., 248" WB, D46-170HP rears w/HN susp., 11 yd MTM Bridgemaster mixer. Located in MN. #2



2006 Kenworth W900, C13 Cat engine, 4500 Allison trans., 248" WB, D46-170HP rears w/HN susp., 5 axle, 11 yd MTM Bridgemaster mixer. Located in MN. #3



3-2005 Kenworth W900, C13 Cat engine, RT014909ALL trans., 248" WB, D46-170HP rears w/Chalmers susp., 11 yd Kimble Bridge mixer. Located in MN. #4



3-2003 Kenworth W900, ISC Cummins engine, RT014909ALL trans., 248" WB, DSH44 rears w/Chalmers susp., 11 yd MTM Bridgemaster V mixer. Located in MN. #5



1996 Kenworth W900, 3306 Cat engine, RT014909MLL trans., 248" WB, 12 yd MTM Bridgemaster mixer. Located in MN. #6

TRADE YOUR USED MIXERS AGAINST NEW, IN STOCK CON-TECH MIXERS AND SAVE \$\$ ON TAXES WITH THE SECTION 179 DEDUCTION



2009 Peterbilt 340, PX8 engine, RT011908LL trans., 230" WB, D46-170HP rears w/Chalmers susp., 10 yd Kimble mixer. Located in MN. #7



2-2009 Peterbilt 365, ISM Cummins engine, 4500 Allison trans., 248" WB, D46-170HP rears w/Chalmers susp., 11 yd MTM Bridgmaster V mixer. Located in MN. #8



2008 Peterbilt 340, ISC Cummins engine, RT014909ALL trans., 232" WB, D46-170HP rears w/HN susp., 10.5 yd CBMW mixer w/tag axle. #9



3-2008 Peterbilt 365, ILS-330 Cummins engine, RT014909ALL trans., D46-170HP rears w/Chalmers susp., 10.5 yd CBMW mixer. Located in MN and GA. #10



1-2009, 2-2008 Peterbilt 340, ISC-330 Cummins engine, RT014909ALL trans., 248" WB, D46-170 HP rears w/ Chalmers susp., 11 yd CBMW Bridge mixer. Located in MN. #11



2008 Peterbilt 340, PX8 engine, RT011908ALL trans., 232" WB, D46-170 rears w/HN susp., 10.5 yd CBMW mixer. Located in GA. #12

DUE TO THE LARGE GROUPS OF LIKE TRUCKS AT WELSH EQUIPMENT, REPRESENTATIVE PHOTOS MAY BE USED. IT IS THE BUYER'S RESPONSIBILITY TO VERIFY INDIVIDUAL SPECS BY SERIAL NUMBER.



PETERBILT, FREIGHTLINER, AND MACK REAR DISCHARGE MIXERS



2-2007 Peterbilt 357, ISM Cummins engine, RT014909ALL trans, 248" WB, D46-170 rears w/Chalmers susp., 11 yd MTM Bridgemaster V mixer. Located in MN. #13



2-2006, 7-2005 Peterbilt 340, ISC Cummins engine, 3500 Allison trans., 232" WB, RT46-160 rears w/HN susp., 9 yd CBMW mixer. Located in MN and GA. #14



1-2005, 6-2004 Peterbilt 357, ISL Cummins engine, RT014909ALL trans., 248" WB, D405P rears w/Chalmers susp., 5 axle, 10.5 yd Kimble Bridge mixer. Located in MN. #15



2-2009 Freightliner, M2 0M460LA engine, RT014909ALL trans., 248" WB, RT46-160 rears w/HN susp., 10.5 yd MTM mixer. Located in GA. #16



3-2003 Freightliner FDL120, ISL Cummins engine, RT014909ALL trans., 248" WB, D405P rears w/Chalmers susp., 5 axle, 10.5 yd Kimble Bridge mixer. Located in MN. #17



1-2009, 5-2008 Mack GU813, MP7 engine, T310MLR trans., 224" WB, Mack rears w/Spring susp., 10.5 yd CBMW mixer. Located in MN and GA. #18

WE CAN HELP YOU WITH YOUR FINANCING NEEDS - UNBEATABLE LEASE RATES FOR USED TRUCKS



2008 Mack GU813, MP7 engine, T310MLR trans., 224" WB, Mack rears w/Spring susp., 10.5 yd MTM mixer. Located in MN. **#19**



3-2009, 5-2008 Mack GU713, MP7 engine, T310MLR trans., 248" WB, Mack rears w/Beam susp., 6 axle, 11 yd MTM Bridgmaster V mixer. Located in MN **#20**



2-2007, 1-2005 Mack CV513, AMI engine, RT014909ALL trans., 248" WB, RT46- 160 rears w/ Chalmers susp., 11 yd CBMW Bridge mixer. Located in MN. **#21**



2-2007 Mack CV513, AMI engine, T310MLR trans., 248" WB, Mack rears w/Beam susp., 5 axle, 11 yd Houbly Bridge mixer. Located in MN. **#22**



2007 Mack CV533, ISL engine, RT014909ALL trans., 248" WB, Mack rears w/Chalmers susp., 11 yd Kimble Bridge mixer. **#23**



1-2006, 2-2005 Mack CV513, AMI Mack engine, T310MLR trans., 248" WB, Mack rears w/Beam susp., 11 yd MTM Bridgmaster V mixer. Located in MN. **#24**

**FOR ALL YOUR USED MIXER TRUCK NEEDS,
CONTACT RICK WELSH @ 507-374-2261
OR Email @ rickweq@welshequipment.com**



MACK REAR DISCHARGE MIXERS



2005 Mack CT713, AMI engine T310MLR trans., 224" WB, Mack rears w/Spring susps., 10.5 yd MTM mixer. Located in MN. #25



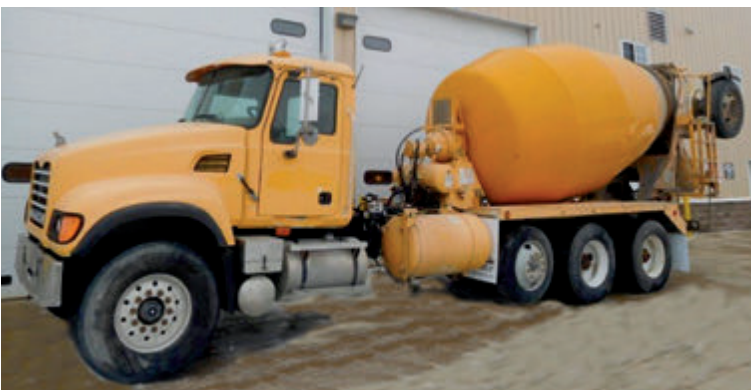
1-2005, 3-2004, 1-2002 Mack CV713, AMI engine, RT014909ALL trans., 224" WB, RT46-160 rears w/HN susp., 10.5 yd CBMW mixer. #26



1-2005, 5-2004 Mack CV513, AMI370 engine, 4500 Allison trans., 248" WB, Mack rears w/Beam susp., 11 yd MTM Bridgemaster V mixer. #27



2005 Mack CV513, AMI Mack engine, RT014909ALL trans., 248" WB, Mack rears w/Beam susp., 10.5 yd MTM Bridgemaster V mixer. #28



2004 Mack CV713, AMI engine, T310MLR trans., 248" WB, Mack rears w/Beam susp., 5 axle, 11 yd MTM Bridgemaster V mixer, New Con-Tech HP drum. Located in MN. #29



2-2004 Mack CV713, AMI engine, TM307M trans., 228" WB, Mack rears w/Spring susp., tag axle, 10.5 yd CBMW mixer. Located in MN. #30

WE SHIP TRUCKS WORLDWIDE - YOUR ONE STOP EXPORT SPECIALIST



2-2003 Mack CV7133, AMI engine, T310MLR trans., 248" WB, Mack rears w/Beam susp., 6 axle, 11 yd Kimble Bridge mixer. Located in MN. #31



2004 Mack DM, AMI engine, T309M trans., 212" WB, Mack rears w/Spring susp., 10.5 yd Beck mixer. #32



2002 Mack CV513, E7-350 engine, RT014909ALL trans., 248" WB, RT46-160 rears w/Chalmers susp., 5 axle, 11 yd MTM Bridgmaster V mixer. Located in MN. #33



3-2001, 2-2000, 1-1998, 2-1997, 1-1995 Mack RD690, E7-300 engine, T2080 trans., 248" WB, Mack rears w/Beam susp., 11 yd MTM Bridgmaster mixer. Some have pushers. Located in MN. #34



2000 Mack DM, E7-300 engine, T2080B trans., 212" WB, Mack rears w/Spring susp., 10.5 yd MTM mixer. #35



1-1998, 1-1996 Mack RD680, E7-350 engine, 11 yd Kimble Bridge mixer. Located in MN. #36

NEW SELECTION OF MIXER TRUCKS ARRIVING DAILY
WWW.WELSHEQUIPMENT.COM



MACK, VOLVO & OSHKOSH REAR DISCHARGE MIXERS



1-1997, 1-1996 Mack RD690, E7-300 engine, T2080B trans., 224" WB, Mack rears w/Beam susp., 10.5 yd MTM paver mixer. Located in MN. #37



1995 Mack RD690, E7-300 engine, T2080 trans., 224" WB, Mack rears w/Spring susp., 9.5 yd MTM mixer. Located in MN. #38



1994 Mack DM, E7-300 engine, T2080 trans., 212" WB, Mack rears w/Spring susp., 10 yd CBMW mixer. Located in MN. #39



2003 Volvo VHD8, Volvo engine, RT014909ALL trans., 212" WB, 11 yd MTM mixer. Located in GA. #40



2006 Oshkosh S2346 6x6, C13 Cat engine, 4500 Allison trans., 208" WB, double frame, RT46-160 rears w/Chalmers susp., 6 axle, 11 yd Loadspan mixer. Located in MN. #41



1-2005, 1-2005, 1-2001 Oshkosh F2146 6x6, ISM Cummins engine, RT014909ALL trans., 232" WB, RT46-160 rears w/72" HN susp., 10 yd MTM Bridgemaster mixer. Located in MN. #42

FOR YOUR USED MIXER TRUCK NEEDS IN OUR GEORGIA LOCATION, CONTACT JIMMY HARMON @ 770-227-2001, 770-883-5405 OR EMAIL @ jharmon@welshequipment.com



2-2000 Oshkosh F2146 6x6, ISM Cummins engine, RT014909MLL trans., 232" WB, RT46-160 rears w/HN 72" susp., 10 yd MTM Bridgemaster mixer. #43



5-1996 Oshkosh F1840 6x6, L10 Cummins engine, RT014909MLL trans., 232" WB, RT45-145 rears w/RS460 susp., 72" beam, 10 yd MTM Bridgemaster Mixer. Located in MN. #44



4-2007 Sterling 9511, C11 Cat engine, RT014909ALL trans., 236" WB, RT46-160 rears w/HN susp., 10.5 yd MTM mixer, pusher axle. Some with new Con-Tech HP drums. Located in MN. #45



2-2007 Sterling 9513, MBE 4000 engine, RT014909ALL trans., 224" WB, RT46-160 rears w/Chalmers susp., 10.5 yd MTM mixer. Located in MN and GA. #46



1-2007, 1-2006, 4-2005 Sterling 9, 2007 is C13 Cat engine, 2006 and 2005 C11 Cat engine, RT014909ALL trans., 224" WB, RT46-160 rears w/Chalmers susp., 10.5 yd MTM mixer. #47



2-2007, 1-2005 Sterling 85115, C7 Cat engine, RT011909ALL trans., 236" WB, RT45-145 rears w/HN susp., 10 yd MTM mixer, tax axle. Located in MN. #48

****LOCATED IN GRIFFIN, GEORGIA****

CONVENIENTLY LOCATED 40 MINUTES FROM ATLANTA AIRPORT AND EASY ACCESS TO PORTS.



FORD AND STERLING REAR DISCHARGE MIXERS



2-2007 Ford 8513, ISC Cummins engine, RT011909ALL trans., 232" WB, RT45-145 rears w/HN susp., 9 yd MTM mixer, tag axle. **#49**



2-2006 Sterling 9511, MBE 4000 engine, 4500 Allison trans., 248" WB, RT46-160 rears w/HN susp., 6 axle, 1-11 yd CTM BridgeKing mixer, 1-11 yd MTM Bridgemaster Mixer, Central tire inflation. Located in MN. **#50**



2-2006, 3-2005 Sterling 9511, C11 Cat engine, RT014909ALL trans., 260" WB, RT46-160 rears w/HN susp., 6 axle, 11 yd MTM Bridgemaster V mixer. Located in MN. **#51**



7-2005 Sterling 9511, C11 Cat engine, RT014909ALL trans., 248" WB, RT46-160 rears w/HN susp., 5 axle, 11 yd MTM Bridgemaster V mixer. Located in MN. **#52**



3-2004 Sterling, C10 Cat engine, RT014909ALL trans., 260" WB, RT46-160 rears w/HN susp., 6 axle, 12 yd MTM Bridgemaster V mixer, new Con-Tech HP drums. **#53**



2004 Sterling 9511, C12 Cat engine, 4500 Allison trans., 248" WB, RT46-160 rears w/T ride susp., 11 yd MTM Bridgemaster mixer, new Con-Tech HP drum. **#54**

CALL FOR COMPETITIVE SHIPPING RATES



1-2003, 2-2002 Sterling 9511, C10 on 2003, ISM Cummins on 2002, RT014909ALL trans., 260" WB, RT46-160 rears w/HN susp., 10.5 yd MTM Birdgemaster V mixer. Located in MN. #55



2003 Sterling 9511, ISM Cummins engine, RT014909ALL trans., 248" WB, RT46-160 rears w/ Chalmers susp., 5 axle, 11 yd MTM Bridgemaster V paver mixer, new Con-Tech HP drum. Located in MN. #56



2-2003, 2-2002, 1-2001 Sterling 9511, ISC Cummins engine, RT011909ALL trans., 236" WB, RT45-145 rears w/HN susp., 10 yd MTM mixer, tag axle. Located in MN. #57



1-2003, 1-2001, 1-1999 Sterling 9511, ISM Cummins engine, RT014909ALL trans., 248" WB, RT46-160 rears w/HN susp., 11 yd MTM Bridgemaster or Schwing mixer. Located in MN. #58



2-2002 Sterling 9511, C10 Cat engine, RT014909ALL trans., 248" WB, RT46-160 rears w/RS460 susp., 6 axle, 11 yd Kimble Bridge mixer. Located in MN. #59



3-2001 Sterling 9511, C10 Cat engine, RT014909ALL trans., 248" WB, RT46-160 rears w/HN susp., 6 axle, 11 yd MTM Bridgemaster paver mixers. Located in MN. #60

WE PAY TOP DOLLAR FOR SINGLE TRUCKS, MIXER FLEETS AND EQUIPMENT - CALL US TODAY!



FORD AND STERLING REAR DISCHARGE MIXERS



2-2001, 3-1999 Sterling 8513, ISC Cummins engine, RT011908LL trans., 224" WB, RT45-145 rears w/HN susp., 9 yd MTM mixer. #61



1999 Sterling 9511, ISM Cummins engine, RT014909MLL trans., 260" WB, RT46-160 rears w/HN susp., Water tanker. #62



1-1998, 1-1997 Ford 9511, M11 Cummins engine, RT014909MLL trans., 248" WB, RT46-160 rears w/RS460 susp., 6 axle, 11 yd MTM Bridgemaster mixer. #63



1998 Ford 8513, 8.3 Cummins engine, RT7608LL trans., 236" WB, RT46-160 rears w/HN susp., 10 yd MTM Bridgemaster mixer. Located in MN. #64



2-1998 Ford 8513, 3126 Cat engine, RT7608LL trans., 1-9.5 yd MTM mixer, 1-9.5 yd Smith mixer. #65



1996 Ford L8000, 8.3 Cummins engine, RT7608LL trans., 222" WB, RT45-145 rears w/RS400 susp., 9 yd MTM mixer. #66

WE SHIP TO DESTINATIONS THROUGHOUT THE WORLD



1-1995, 1-1994, 1-1993 Ford L8000, 8.3 Cummins engine, RT014909MLL trans., 248" WB, RT46-160 rears w/RS460 susp., 10.5 yd MTM Birdgemaster Mixer. #67



2-1991 Ford L8000, 8.3 Cummins engine, RT7608LL trans., RT45-145 rears w/RS400 susp., 10 yd MTM mixer w/tag axle. #68



1989 Ford L9000, L10 300 Cummins engine, RT014909MLL trans., 248" WB, RT46-160 rears w/RS460 susp., 6 axle, 11 yd MTM Bridgemaster mixer. #69



2-2013 International 5500i, Maxforce engine, RT014909ALL trans., RT46-160 rears w/HN susp., 11 yd CBMW mixer. Located in MN. #70



2012 International 5600i, ISM Cummins engine, RT014909ALL trans., 222" WB, RT46-160 rears w/HN susp., 10.5 yd CBMW mixer. Located in GA. #71



2011 International 7700i, Maxforce engine, RT014909ALL trans., 230" WB, RT46-160 rears w/HN susp., 10.5 yd CBMW mixer. Located in GA. #72



INTERNATIONAL REAR DISCHARGE MIXERS



1-2010, 2-2009 International 5600i, ISM Cummins engine, 4500 Allison trans., 224" WB, RT46-160 rears w/ Chalmers susp., 10.5 yd MTM mixer. Located in GA. #73



1-2007, 13-2006 International 5600i, ISM Cummins engine, 4500 Allison trans., 212" WB, RT46-160 rears w/ HN susp., 10.5 yd MTM mixer. Located in MN and GA. #74



2-2007 International, ISX Cummins engine, 10.5 yd CBMW mixer. Located in GA. #75



4-2006 International 5500i, ISM Cummins engine, RT014909ALL trans., 248" WB, RT46-160 rears w/HN susp., 5 axle, 11 yd MTM Bridgemaster V mixer. #76



6-2007, 10-2005, 1-2004 International 5600i, ISM Cummins engine, RT014909ALL trans., 224" WB, RT46-160 rears w/HN susp., 10.5 yd MTM paver mixer. Located in MN and GA. #77



1-2003 International 5600i, ISM Cummins engine, RT014909ALL trans., 222" WB, RT46-160 rears w/HN susp., 10.5 yd MTM paver mixer. Located in GA. #78

WE HAVE ONE OF THE MOST MODERN TRUCK REPAIR AND PAINT FACILITIES IN THE U.S.A.



1-2002, 1-2001 International 5600i, ISM Cummins engine, RT014909ALL trans, 236" WB, RT46-160 rears w/ HN susp., 5 axle, 10.5 yd MTM mixer. Located in MN. #79



2000 International 5500i, ISM Cummins engine, RT014909MLL trans., 248" WB, RT46-160 rears w/HN susp., 11 yd MTM Bridgemaster mixer. #80



1999 International Paystar 5000 SFA, ISM Cummins engine, RT014909ALL trans., 248" WB, RT46-160 rears w/HN susp., 11 yd MTM Bridgemaster mixer. Located in MN. #81



1-1999, 1-1997 International Paystar SFA, M11 Cummins engine, RT014909MLL trans., 248" WB, RT46-160 rears w/HN susp., 5 axle, 11 yd MTM Bridgemaster Mixer. Located in MN. #82



1997 International Paystar SBA, M11 Cummins engine, RT014909MLL trans., 212" WB, RT46-160 rears w/RS460 susp., 10.5 yd MTM mixer. #83



2-1988 Internatioanl S2500, L10 300 Cummins engine, RT014909MLL trans., 248" WB, RT46-160 rears w/RS460 susp., 6 axle, 11 yd MTM Bridgemaster mixer. #84

**IF YOU DON'T SEE WHAT YOU ARE LOOKING FOR - CALL US
TOLL FREE AT 800-677-0574**



67077 170 Ave.

Dodge Center, MN 55927

Phone: 507-374-2261

Fax: 507-374-2548

www.welshequipment.com

Email: salesweq@welshequipment.com

MNDLR21707

PRESORTED
STANDARD
US POSTAGE
PAID
ROCHESTER, MN
PERMIT NO 289

COMING SOON

18-2013 Kenworth T800, ISX350 Cummins engine, RT014909ALL trans., Chalmers susp., 10.5 yd Extreme Duty Mixers, 30-60,000 miles, like new.



1-2012 Peterbilt 365, MX14 engine, 4500 Allison trans., 248" WB, D46170 rears w/Chalmers susp., 11 yd CTM BridgeKing mixer. #85

4-2009 Kenworth W900, ISM Cummins engine, 4500 Allison trans., 248" WB, D46-170 rears w/Chalmers susp., 5 axle, 1 1yd MTM Bridgemaster V mixer. Located in MN. #86



3-2007, 13-2006, 1-2005, 1-2004, 1-2003 Kenworth W900, ISM Cummins engine, RT014909ALL trans., 248" WB, Rt46-160 rears w/Chalmers susp., 11 yd MTM Bridgemaster V mixer. Located in MN. #87

3-2005 Mack CV713, AMI engine, T310MLR trans., 224" WB, Mack rears w/Spring susp., 10.5 yd MTM mixer. Located in MN and GA. #88